

# QUICKNOTES

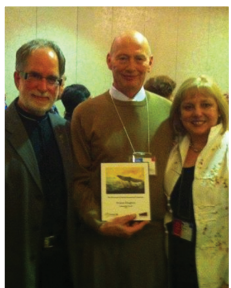
September 2013

*A glimpse into the busy worlds of our exceptional faculty and students!*

## Faculty NEWS



Mezzo-soprano **JOYCE CASTLE**, professor of voice, and the Des Moines Metro Opera (featuring conductor David Neely, KU director of orchestral activities) received rave reviews for their summer production of Strauss' *Elektra*. *Des Moines Register* reporter Michael Morain had this to say of Castle's performance as Klytämnestra, "The formidable Joyce Castle, another company newcomer, rounds out the trio of leading ladies as Klytämnestra, who shows up in a colossal gold headdress, a lavender gown dripping with trinkets, and a cape adorned with some sort of tentacled beast...So, yeah. The woman knows how to make an entrance. She brought both menace and vulnerability to the drug-addled queen, staggering around the stage and singing with a rich, hard-edged mezzo-soprano." Read full reviews in the [Des Moines Register](#) and [Opera Today](#).



**JIM DAUGHERTY**, associate professor of choral/vocal pedagogy, was honored in July by the International Phenomenon of Singing Symposium in St. John's, Newfoundland with its first Ambassador Award. The citation reads, in part, "to a true scholar and leader in choral music and pedagogy. He inspires many through his teaching, research, and dedication to his students. His contributions to the International Phenomenon of Singing Symposia over many years have been a gift and joy to all."



In June, Meredith Music Publications released the book "*Wind Bands of the World: Chronicle of a Cherished Tradition*" by esteemed professor of music education and music therapy **BOB FOSTER**. Meredith Music Publications had the following to say about Foster's impressive new work, "This engaging text presents a comprehensive history of the wind band from its earliest days to today. The author's narrative describes the development of instruments, musicians, composers, conductors, and the music itself, tracing in chronological order, virtually every aspect of the growth of bands that has led to today's outstanding ensembles. A must read for musicians and for those interested in music and history."

# QUICKNOTES

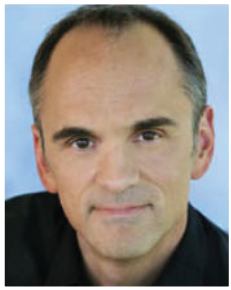
---



**STEVE LEISRING**, associate professor of trumpet, was invited to join the San Diego Symphony for multiple concerts over the July 4th holiday, under the direction of Academy-Award-Winning composer/conductor Bill Conti (*Rocky*, *The Right Stuff*, conductor of the Academy Award Orchestra). *Photo: Leisring is 2nd from right.*

In June, Professor Leisring joined the Kansas City Symphony for a performance of the rarely performed *Eine Alpensinfonie (Alpine Symphony)* by Richard Strauss.

---



**DAVID NEELY** conducted Strauss' *Elektra* and Britten's *Peter Grimes* to national critical acclaim at the Des Moines Metro Opera festival this summer. Cast members in the Strauss included KU's Joyce Castle as Klytämnestra.

Read the reviews in the [Des Moines Register](#) and [Opera Today](#).

---



**DENA REGISTER**, associate professor of music education and music therapy, was on sabbatical in Thailand for the 2013 spring semester. Register worked with a music therapy student doing a 6-month internship and 11 other students there for 5-weeks on a study abroad program, during which they provided music therapy services in a variety of locations in the Bangkok area for multiple populations.

---



**ERIC STOMBERG**, associate professor of bassoon, joined the faculty of the internationally renowned Sarasota Music Festival in June 2013. Additionally, Stomberg joined the Serafin quartet on a CD featuring the music of Jennifer Higdon to be released on the Naxos label in September 2013.

---



The second edition in Spanish of professor of ethnomusicology **KETTY WONG**'s book "*La música nacional: Identidad, mestizaje y migración en el Ecuador*" was released on July 25, 2013 in Quito by the Casa de la Cultura Ecuatoriana Benjamín Carrión (House of Ecuadorian Culture Benjamín Carrión). In June 2013, this book received the Latin American Studies Association book award LASA-Ecuador for the best research on an Ecuadorian social aspect published in 2011 and 2012. Professor Wong also received a 10-month Fulbright U.S. Scholars Grant to conduct research on how Chinese people adopt and adapt Western cultural influences to their own aesthetics through the case study of salsa and ballroom dancing in China. Read the [LJWorld story](#).

---

# QUICKNOTES

---



**STEPHANIE ZELNICK**, associate professor of clarinet, was recently awarded a grant from the American Embassy in Lithuania to perform and teach throughout the country in December 2013. Zelnick will present concerts in Vilnius, Kedainiai and Rokiskis, and teach a master class at the Vilnius Music and Theater Academy. Additionally, Zelnick was selected to serve again on the National Peer Review Committee for the J. William Fulbright Committee.

---

## Student NEWS

---

Members and alumni of the **KU VOCAL/CHORAL PEDAGOGY RESEARCH GROUP** presenting podium research studies at the International Phenomenon of Singing Symposium, July 7 -10, in St. John's, Newfoundland, Canada included: Sheri Cook-Cunningham, Ph.D. student in choral pedagogy; Jim Daugherty, associate professor of choral/vocal pedagogy; Melissa Grady, Ph.D. student in choral pedagogy; Amy Hanson, Ph.D. student in music education; Katie Hom, M.M.E. '13, student in choral pedagogy; Heather Nelson, Ph.D. student in vocal pedagogy; Amelia Rollings, Ph.D. student in vocal pedagogy; Kathy Price, Ph.D. '10, Assistant Professor of Voice and Director of the Presser Voice Laboratory, Westminster Choir College; and Melissa Brunkan, Ph.D. '12, Assistant Professor of Choral Music Education, Louisiana State University.

Presenting podium research studies at the International Voice Foundation Symposium, May 30-June 2, in Philadelphia were: Melissa Grady, Jim Daugherty, Katie Hom, Heather Nelson, Amelia Rollings, Matt Schloneger, Ph.D. candidate in vocal pedagogy, and Jeremy Manternach, Ph.D. '12, Assistant Professor of Choral Music Education at the University of Arizona.

The *Voice Foundation Newsletter* recently pictured the KU presenters, acknowledging the strong symposium presence of voice researchers associated with the KU School of Music.

---

**CARLOS ESPINOSA**, DMA student in orchestral conducting, completed a 3-year residency as the first Assistant Conductor at Hot Springs Music Festival in Hot Springs, AR. Espinoza also completed his second year as Conductor in Residence at the Taneycomo Music Festival, a new classical music festival in Branson, MO. Additionally, Espinoza was a finalist in the 2013 American Prize Conducting Competition, university orchestra division.

---

**HYERIM JEON**, DMA cello student, won the recent Des Moines Symphony Orchestra audition for cello. Her debut performance with the orchestra will be Sept. 14, 2013. Additionally, she was selected as a soloist for the Kansas City Civic Orchestra's performance of the Lalo Cello Concerto on October 12, 2013.

# QUICKNOTES

---

GUNYONG (GY) LEE, DMA trombone student, performed as guest principal/second trombone with three professional orchestras in Korea during summer 2013. GY performed as substitute (guest) principal trombone with the Korean Chamber Orchestra at the Seoul Arts Center in May; with the Seongnam Philharmonic Orchestra at the Seongnam Art Center in June; and with Seoul Philharmonic in June. The KCO and SPO concerts were televised in Korea. GY, a student of Michael Davidson, associate professor of trombone, also played substitute (guest) trombone with the Korean brass choir “Nabals.”

---

LEIGH MUÑOZ, DMA bassoon student, has been appointed to Adjunct Instructor of Bassoon at Missouri State University in Springfield, Missouri beginning Fall 2013 (in addition to her post as Adjunct Instructor of Bassoon at Washburn University in Topeka, KS).

---

## Alumni NEWS

---



KATIE HOM, M.M.E. '13 in choral pedagogy, received the 2013 Newman Medal from the Acoustical Society of America for her master's thesis examining the effects of differing room acoustics on choral sound.

---

MICHAEL MAPP, DMA in wind conducting '13, is the new Director of Bands at Washburn University in Topeka.

---

WILLIAM MUÑOZ, DMA trumpet performance '13, is an instructor at Normandale College, MN.

---

MICHAEL SCOTT NELSON, DMA composition '13, is Academic Director of the Master of Arts in Digital Arts (MADArts) Program at Goucher College in Baltimore, MD

---

JÁNIS PORIETIS, DMA trumpet performance '13, is Assistant Principal Trumpet, National Orchestra of Latvia; Principal Trumpet Latvia Chamber Orchestra; and faculty member of the Latvian Academy of Music.

---

Jobs news for recent MEMT grads:

ALEX PIAZZA - Jardine Middle School, Wichita

SONJA WEIST - orchestra director, Ft. Scott School District

ALEXANDRA DRAKE - assistant band director 5-12, Eldorado

KENDRA TEMAAT - elementary general music teacher, Eisenhower Elementary, Norman, OK

BRAD FEAGAN - elementary general music, Chapman

ERICA BROOKS - elementary strings, Olathe

TYLER GRAVES - band director, Spring Valley High School, Las Vegas, NV

JOE STUEVER - assistant band director, Blue Valley West High School

KATIA SITTMAN - elementary general music, Edgar Road Elementary, Webster Groves District, MO

---

# QUICKNOTES

## Upcoming EVENTS

### SEPTEMBER

- SEPT. 6 VISITING ARTIST SERIES:  
GERRY PAGANO, TROMBONE**  
7:30 p.m. Swarthout Recital Hall  
*Admission free*
- SEPT. 8 ALLÈGRESSE**  
7:30 p.m. Swarthout Recital Hall  
*Admission free*
- SEPT. 10 TUBA/EUPHONIUMFEST GRAND RECITAL**  
7:30 p.m. Swarthout Recital Hall  
*Admission free*
- SEPT. 15 KANSAS VIRTUOSI**  
7:30 p.m. Swarthout Recital Hall  
*Admission free*
- SEPT. 20 COLLAGE CONCERT**  
7:30 p.m. Lied Center of Kansas  
*Tickets: Lied Center Box Office | 785-864-2787 | lied.ku.edu*
- SEPT. 22 VISITING ARTISTS SERIES:  
CAEN THOMASON, FLUTE**  
12:00 PM Swarthout Recital Hall  
*Admission Free*
- SEPT. 22 FACULTY RECITAL SERIES:  
JULIA BROXHOLM, SOPRANO &  
VISITING ARTIST: RUSSELL MILLER, PIANO**  
2:30 p.m. Swarthout Recital Hall  
*Admission free*
- SEPT. 23 VISITING ARTIST SERIES: KYRA SIMS, HORN &  
PAUL STEVENS, HORN**  
7:30 p.m. Swarthout Recital Hall  
*Admission free*
- SEPT. 26 VISITING ARTIST SERIES: THOM DREEZE,  
BARITONE & JAYNE SIEMANS, SOPRANO**  
7:30 p.m. Swarthout Recital Hall  
*Admission free*
- SEPT. 27 JAZZ ENSEMBLES I, II, III**  
7:30 p.m. Woodruff Auditorium, Kansas Union  
*Admission free*

### OCTOBER

- OCT. 1 KU SYMPHONY ORCHESTRA**  
7:30 p.m. Lied Center of Kansas  
*Tickets: Lied Center Box Office | 785-864-2787 | lied.ku.edu*
- OCT. 2 FACULTY RECITAL SERIES:  
MICHAEL DAVIDSON, TROMBONE**  
7:30 p.m. Swarthout Recital Hall  
*Admission free*
- OCT. 6 WIND ENSEMBLE**  
2:30 p.m. Lied Center of Kansas  
*Tickets: Lied Center Box Office | 785-864-2787 | lied.ku.edu*
- OCT. 18 VISITING ARTIST SERIES:  
MARIE RUBIS BAUER, ORGAN**  
7:30 p.m. Bales Organ Recital Hall  
*Tickets: Lied Center Box Office | 785-864-2787 | lied.ku.edu*
- OCT. 20 INSTRUMENTAL COLLEGIUM MUSICUM**  
7:30 p.m. Swarthout Recital Hall  
*Admission Free*
- OCT. 22 SYMPHONIC BAND & CHAMBER WINDS**  
7:30 p.m. Lied Center of Kansas  
*Tickets: Lied Center Box Office | 785-864-2787 | lied.ku.edu*
- OCT. 27 KU TUBA/EUPHONIUM CONSORT & THUNDER  
ALL-STAR TUBA/EUPHONIUM ENSEMBLE**  
2:30 p.m. Swarthout Recital Hall  
*Admission Free*
- OCT. 27 KC HORN CLUB & KU HORN ENSEMBLE**  
7:30 PM Swarthout Recital Hall  
*Admission Free*
- OCT. 28 JAZZ COMBOS I-VI**  
7:00 p.m. Lawrence Arts Center  
*Admission Free*
- OCT. 30 KU SYMPHONY ORCHESTRA  
HALLOWEEN CONCERT**  
7:30 p.m. Lied Center of Kansas  
*Tickets: Lied Center Box Office | 785-864-2787 | lied.ku.edu*



## NOVEMBER

- NOV. 4 FACULTY RECITAL SERIES:  
ERIC STOMBERG, BASSOON**  
7:30 p.m. Swarthout Recital Hall  
*Admission free*
- NOV. 6 TROMBONE CHOIR**  
7:30 p.m. Swarthout Recital Hall  
*Admission free*
- NOV. 7 ALATURKA & JAZZ ENSEMBLE I**  
7:30 p.m. Lawrence Arts Center  
*Tickets: Contact the Lawrence Arts Center  
785-843-2787  
\$10 for adults, \$5 for students & seniors*
- NOV. 8 VISITING ARTIST SERIES:  
CHRISTOPHER LANE, ORGAN**  
7:30 p.m. Bales Organ Recital Hall  
*Tickets: Lied Center Box Office | 785-864-2787 | [lied.ku.edu](http://lied.ku.edu)*
- NOV. 10 WIND ENSEMBLE**  
3:00 p.m. Kauffman Center for the Arts  
*Admission free, but tickets are required.  
Call (816) 994-7222 for information*
- NOV. 11 UNDERGRADUATE HONOR RECITAL**  
7:30 p.m. Swarthout Recital Hall  
*Admission free*
- NOV. 12 BLAKE MCGEE, CLARINET &  
SCOTT TURPEN, SAXOPHONE**  
7:30 p.m. Swarthout Recital Hall  
*Admission free*
- NOV. 13 JAZZ ENSEMBLES II & III**  
7:30 p.m. 130 Murphy Hall  
*Admission free*
- NOV. 13 VISITING ARTIST SERIES:  
ALISON ROBUCK, OBOE**  
7:30 p.m. Swarthout Recital Hall  
*Admission free*
- NOV. 14 KU CHOIRS: WOMEN'S CHORALE &  
CONCERT CHOIR**  
7:30 p.m. First United Methodist Church  
*Admission free*
- NOV. 15 FACULTY RECITAL SERIES:  
PETER CHUN, VIOLA**  
7:30 p.m. Swarthout Recital Hall  
*Admission free*
- NOV. 17 KU PERCUSSION GROUP**  
2:00 p.m. Spencer Art Museum  
*Admission free*

- NOV. 17 KANSAS VIRTUOSI**  
7:30 p.m. Swarthout Recital Hall  
*Admission free*
- NOV. 18 JAZZ SINGERS & JAZZ COMBO I**  
7:30 p.m. Lawrence Arts Center  
*Admission free*
- NOV. 21 SAXOPHONE QUARTETS**  
7:30 p.m. Swarthout Recital Hall  
*Admission free*
- NOV. 24 KU SYMPHONY ORCHESTRA**  
7:30 p.m. Lied Center of Kansas  
*Tickets: Lied Center Box Office | 785-864-2787 | [lied.ku.edu](http://lied.ku.edu)*

## DECEMBER

- DEC. 2 VISITING ARTIST SERIES: PHYLLIS PANCELLA,  
MEZZO-SOPRANO & PAUL NEUBAUER, VIOLA**  
7:30 p.m. Swarthout Recital Hall  
*Admission free*
- DEC. 3 ROCK CHALK SINGERS**  
6:00 p.m. Swarthout Recital Hall  
*Admission free*
- DEC. 4 HELIANTHUS CONTEMPORARY ENSEMBLE**  
7:30 p.m. Swarthout Recital Hall  
*Admission free*
- DEC. 6 VESPERS ON THE ROAD**  
7:30 p.m. JCCC Carlsen Center, Yardley Hall  
*Admission free, but tickets are required.  
Call 913-469-4445 for ticket information*
- DEC. 8 VESPERS**  
2:30 & 7:30 p.m. Lied Center of Kansas  
*Tickets: Lied Center Box Office  
785-864-2787 | [lied.ku.edu](http://lied.ku.edu)*
- DEC. 10 SYMPHONIC BAND & UNIVERSITY BAND**  
7:30 p.m. Lied Center of Kansas  
*Tickets: Lied Center Box Office  
785-864-2787 | [lied.ku.edu](http://lied.ku.edu)*
- DEC. 12 JAZZ VESPERS**  
7:30 p.m. Lied Center of Kansas  
*Tickets: Lied Center Box Office  
785-864-2787 | [lied.ku.edu](http://lied.ku.edu)*
- DEC. 12 INSTRUMENTAL COLLEGIUM MUSICUM**  
7:30 p.m. Bales Organ Recital Hall  
*Tickets: Lied Center Box Office  
785-864-2787 | [lied.ku.edu](http://lied.ku.edu)*