

SWING FEEL

QUARTER NOTE = 180 BPM

Si Si

CHARLIE PARKER

1951

CONCERT

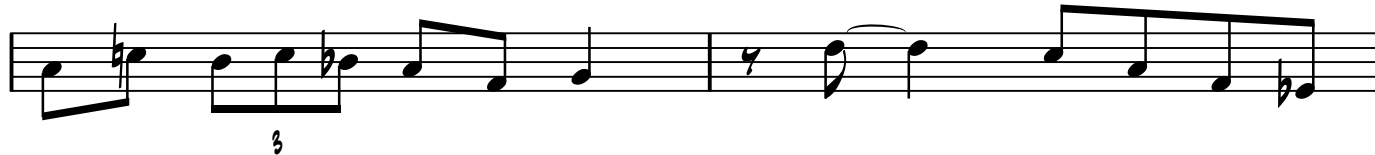
F Δ 9

F Δ 7(#5)



F Δ 6

F13



B \flat 7

B \flat -9(Δ 7)



F Δ 7

F Δ 7(#5)

A-7

D7



G-11

C13(b9)



F Δ 9

D-11

D \flat Δ 9

F#7(#11)

